

EG30

HITACHI

EG30

Rubber Crawler Carrier

- Maximum Payload : 2 500 kg
- Maximum Travel Speed : 10 km/h



Getting the Job Done Efficiently and Productively

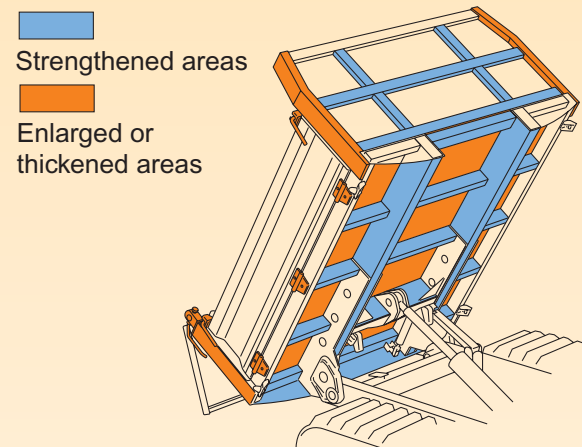


In pursuit of ruggedness and operating ease, the EG30 is designed with numerous features... improved durability, simplified maintenance, environmental friendliness, and easy control in confined job sites.

Notes:
 1. Pictures are for the sake of product explanation. When leaving the machine, follow proper safety procedure such as lowering the dump body.
 2. Decal, caution plates and signs on monitor panel vary depending on countries. Pictured are those for the Japanese market.

Improved Durability Slashes Running Costs

Strengthened dump body



Thickened bottom plates

High-tensile steel plates are used at the bottom of the dump body. The lower frame is leveled to resist shocks during loading.

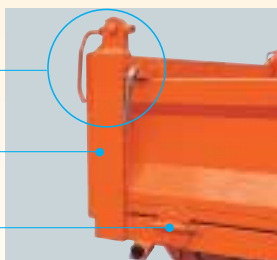


Enlarged dump body columns, hinges and lever

Open/close levers

Dump body column

Hinge



Large bumper

A large bumper is provided at the front against impacts.

Large bumper



Shortened Maintenance

One-sided maintenance

The full-open hood eases daily maintenance and servicing from one side of the machine.



Job-proven HN bushings

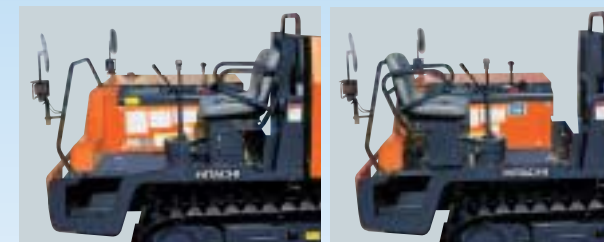


Hitachi original HN bushings help extend lubricating intervals up to 500 hours.

Enhanced Safety and Operator Comfort

Reversible operator seat

The one-touch reversing of the operator seat lets the operator face forward.



Easy-to-read monitor panel

The monitor and switches are grouped for easy reading.



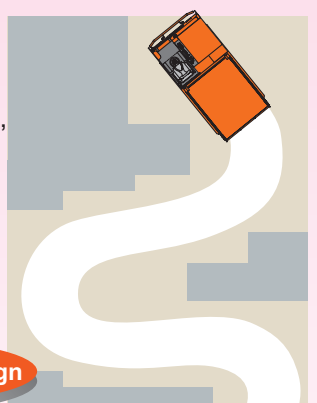
Higher Fundamental Performance for Higher Productivity

The HST* system for smooth starts and stops of travel

The HST hydraulic system reduces engine stall to a minimum even under engine overloading, and allows smooth starts and stops of travel, as well as easy steering in tight space.

*HST : Hydro Static Transmission

2-pump 2-motor design



Long, wide ship-bottom-type undercarriage for soft-terrain travel



Specifications

		EG30	
		Rear/side gate body	
Operating weight	kg	2 430	
Maximum payload	kg	2 500	
Dump body capacity	struck/heaped m ³	0.88/1.24	
Engine	Make and model	Isuzu 3LD2	
	Type	Water-cooled, 4-cycle, direct injection	
	Rated power kW/min ⁻¹ (PS/rpm)	26.2/3 000 (35.6/3 000)	
	Displacement L(cc)	1.496 (1 496)	
Ground pressure	Unloaded kPa(kgf/cm ²)	18 (0.18)	
	Loaded kPa(kgf/cm ²)	34 (0.35)	
Drive system	Fully hydraulic (2-pump 2-motor HST*)		
Shoe type	Steel-cored rubber shoes		
Shoe width	mm	350	
Travel speeds	Low km/h	0-7.3	
	High km/h	0-11.0	

Data is expressed in SI units, followed by reference data in conventional units. *HST : Hydro Static Transmission

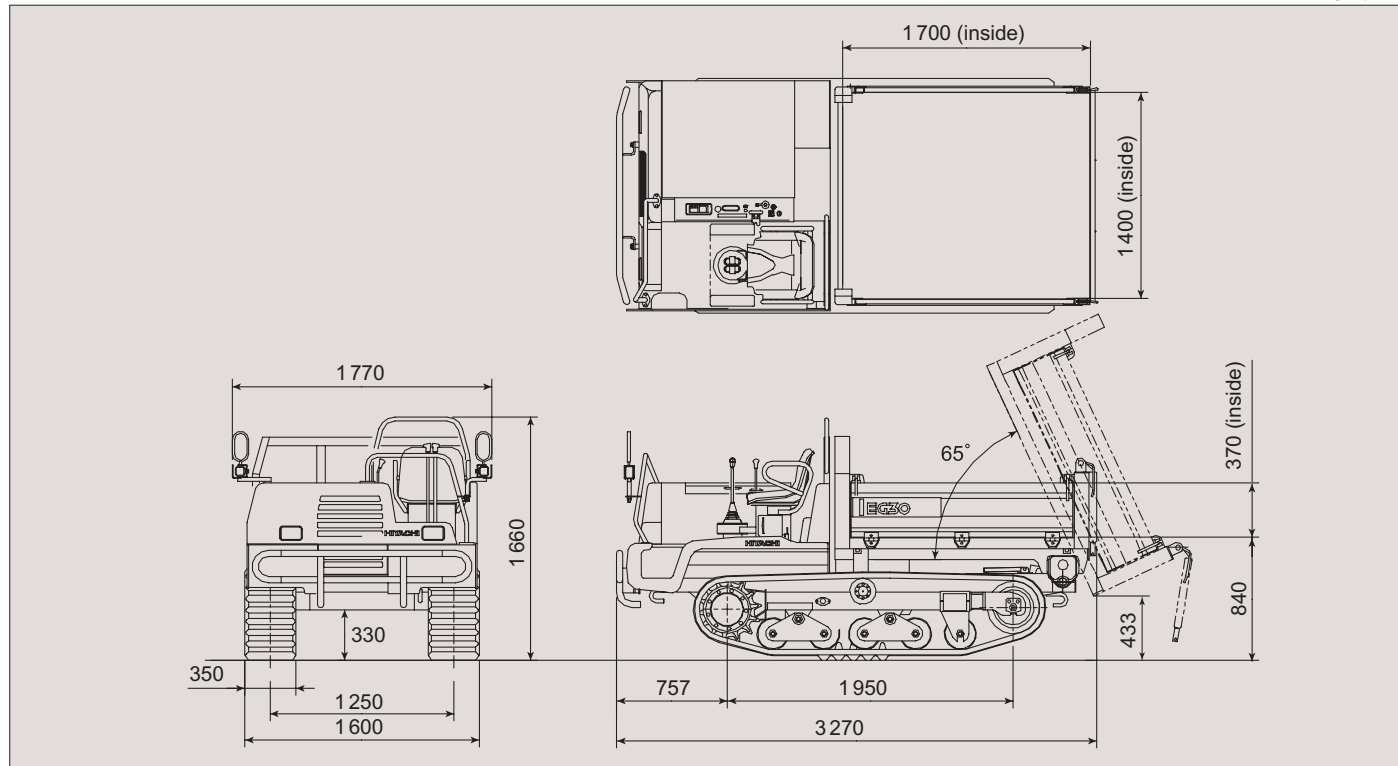


Option

- 2-split type sprocket

Dimensions

Unit:mm



*These specifications are subject to change without notice.
Illustrations and photos show the standard models, and may or may not include optional equipment, accessories, and all standard equipment with some differences in color and features.
Before use, read and understand Operator's Manual for proper operation.*

Hitachi Construction Machinery Co., Ltd.

Head Office : 5-1 Koraku 2-chome, Bunkyo-ku,
Tokyo 112-8563, Japan

Telephone : 81-3-3830-8050

Facsimile : 81-3-3830-8204

URL : www.hitachi-c-m.com

KR-E162

05. 03 (CD/SZ,GT₃)

Printed in Japan