

# Machines for Forest Application

ZAXIS210L	ZAXIS225USRL
ZAXIS240L	ZAXIS280L
ZAXIS350L	ZAXIS380L



*No front end attachment is included in the models. Please choose proper model(s) to your requirement or your own attachment.  
 These specifications are subject to change without notice.  
 Illustrations and photos show the standard models with optional or customer installed equipment, accessories, and all standard equipment with some differences in color and features.  
 Before use, go through Operator's Manual for proper operation.*

© Hitachi Construction Machinery Co., Ltd.

Head Office: 5-1 Koraku 2-chome, Bunkyo-ku,  
 Tokyo 112-8563, Japan  
 Telephone: (03)3830-8050  
 Facsimile: (03)3830-8202

KS-E467

03.10 (CD/SZ, MTs)

Printed in Japan

# Advanced PRODUCTIVITY



**Stability**



**Mobility**

**Durability**



**Maneuverability**



**Serviceability**

*Note: Photos show the standard models with optional and customer installed equipment and accessories.*



**Electrical Switch for Front-End Attachment**



**Overhead Window, Window Washer and Wiper**



**The Operator's Compartment is Designed for both Comfort and Operating Efficiency**

# Advanced RELIABILITY



**Strengthened Durable Front Attachment**  
The reinforced arm and bucket link provide higher machine reliability.



**Air Cleaner Double Filter and Pre-Cleaner**

**Increased Machine Stability**

Longer undercarriage plus heavier counterweight provide higher machine stability for forest application work on unstable ground condition.



**Increased Work Height**

The boom high lift bracket provides higher working range and shorter front swing radius for easier log loading.



**Increased Undercarriage Durability**

The reinforced front idler brackets, upper rollers, track adjuster springs, and full track guards allow machine to work on tough ground condition.



**Reinforced Catwalk and Heavy Duty Corner Guard (Optional)**



**Electric Lubricator (ZAXIS350L, ZAXIS380L ONLY)**



## WEIGHTS AND GROUND PRESSURE

### ZAXIS210L / 225USRL

Equipped with 5.68 m (18'8") boom, 2.91 m (9'7") arm, std. track.

Shoe type	Shoe width	Operating weight	Ground pressure
Triple grouser	600 mm (24")	21 000 kg (46 300 lb)	43 kPa (0.44 kgf/cm <sup>2</sup> , 6.26 psi)
		22 800 kg (50 300 lb)	47 kPa (0.48 kgf/cm <sup>2</sup> , 6.83 psi)
	700 mm (28")	24 100 kg (47 200 lb)	38 kPa (0.39 kgf/cm <sup>2</sup> , 5.55 psi)
		23 200 kg (51 200 lb)	41 kPa (0.42 kgf/cm <sup>2</sup> , 5.97 psi)

Figures in  are data on the ZAXIS225USRL.

### ZAXIS240L

Equipped with 6.00 m (19'8") boom, 2.96 m (9'8") arm, std. track.

Shoe type	Shoe width	Operating weight	Ground pressure
Triple grouser	600 mm (24")	24 800 kg (54 700 lb)	49 kPa (0.50 kgf/cm <sup>2</sup> , 7.11 psi)
		25 100 kg (55 300 lb)	43 kPa (0.44 kgf/cm <sup>2</sup> , 6.26 psi)
	700 mm (28")	25 100 kg (55 300 lb)	43 kPa (0.44 kgf/cm <sup>2</sup> , 6.26 psi)
		25 100 kg (55 300 lb)	43 kPa (0.44 kgf/cm <sup>2</sup> , 6.26 psi)

### ZAXIS280L

Equipped with 6.20 m (20'3") boom, 3.10 m (10'2") arm, std. track.

Shoe type	Shoe width	Operating weight	Ground pressure
Triple grouser	600 mm (24")	28 000 kg (61 700 lb)	53 kPa (0.54 kgf/cm <sup>2</sup> , 7.68 psi)
		28 600 kg (63 100 lb)	46 kPa (0.47 kgf/cm <sup>2</sup> , 6.68 psi)
	700 mm (28")	28 600 kg (63 100 lb)	46 kPa (0.47 kgf/cm <sup>2</sup> , 6.68 psi)
		28 600 kg (63 100 lb)	46 kPa (0.47 kgf/cm <sup>2</sup> , 6.68 psi)

### ZAXIS350L / 380L

Equipped with 6.40 m (21'0") boom, 3.20 m (10'6") arm, std. track.

Shoe type	Shoe width	Operating weight	Ground pressure
Triple grouser	600 mm (24")	33 000 kg (72 800 lb)	62 kPa (0.63 kgf/cm <sup>2</sup> , 8.96 psi)
		37 900 kg (83 600 lb)	71 kPa (0.72 kgf/cm <sup>2</sup> , 10.2 psi)
		33 600 kg (74 100 lb)	54 kPa (0.55 kgf/cm <sup>2</sup> , 7.82 psi)
	750 mm (30")	38 900 kg (85 800 lb)	58 kPa (0.59 kgf/cm <sup>2</sup> , 8.39 psi)
		38 900 kg (85 800 lb)	58 kPa (0.59 kgf/cm <sup>2</sup> , 8.39 psi)
		38 900 kg (85 800 lb)	58 kPa (0.59 kgf/cm <sup>2</sup> , 8.39 psi)

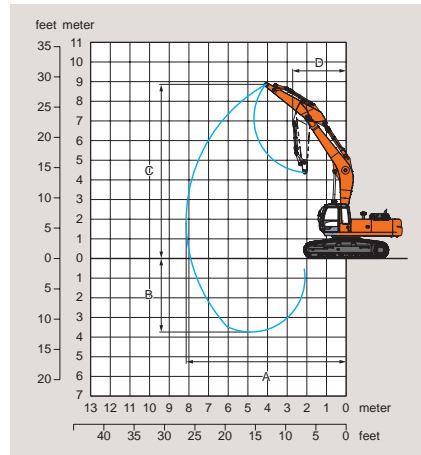
Figures in  are data on the ZAXIS380L.

## WORKING RANGES

Track type	ZAXIS210L		ZAXIS225USRL		ZAXIS240L	
	5.68m (18'8") Boom 2.91m (9'7") Arm		5.68m (18'8") Boom 2.91m (9'7") Arm		6.00m (19'8") Boom 2.96m (9'8") Arm	
	Std.	High*	Std.	High*	Std.	High*
A Max. digging reach	8 450 (27'9")	8 450 (27'9")	8 450 (27'9")	8 450 (27'9")	8 730 (28'8")	8 730 (28'8")
B Max. digging depth	4 490 (14'9")	4 240 (13'11")	4 490 (14'9")	4 240 (13'11")	5 400 (17'9")	5 160 (16'11")
C Max. cutting height	8 970 (29'5")	9 220 (30'3")	8 970 (29'5")	9 220 (30'3")	9 040 (29'8")	9 280 (30'5")
D Min. swing radius	2 720 (8'11")	2 770 (8'11")	2 720 (8'11")	2 720 (8'11")	3 145 (10'4")	3 145 (10'4")

Excluding track shoe lug

\* High track is optionally available.



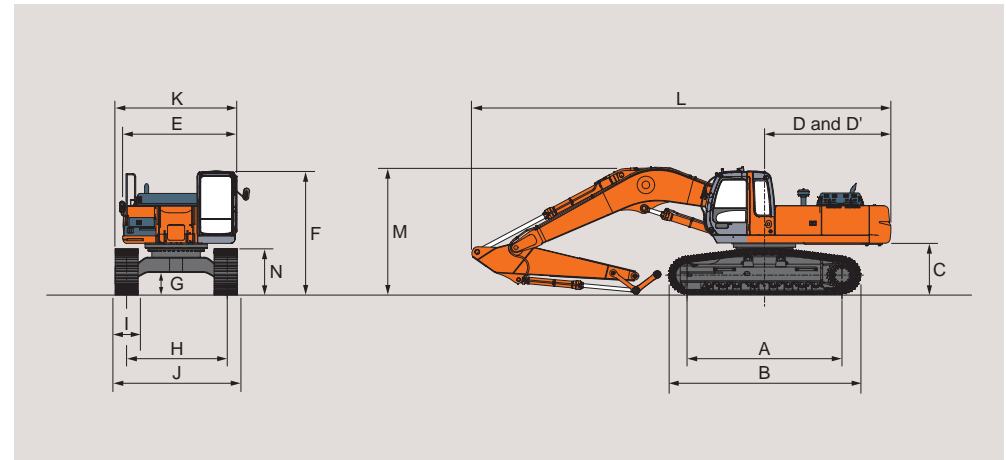
Track type	ZAXIS280L		ZAXIS350L	
	6.20 m (20'3") Boom 3.10 m (10'2") Arm		6.40 m (21'0") Boom 3.20 m (10'6") Arm	
	Std.	High*	Std.	High*
A Max. digging reach	8 970 (29'5")	8 970 (29'5")	9 440 (31'0")	9 440 (31'0")
B Max. digging depth	4 750 (15'7")	4 510 (14'10")	4 480 (14'8")	4 230 (13'11")
C Max. cutting height	9 650 (31'8")	9 890 (32'5")	10 130 (33'3")	10 380 (34'1")
D Min. swing radius	3 150 (10'4")	3 150 (10'4")	3 150 (10'4")	3 150 (10'4")

Track type	ZAXIS380L	
	6.40 m (21'0") Boom 3.20 m (10'6") Arm	
	Std.	High*
A Max. digging reach	9 440 (31'0")	9 440 (31'0")
B Max. digging depth	4 370 (14'4")	4 180 (13'9")
C Max. cutting height	10 250 (33'8")	10 440 (34'3")
D Min. swing radius	3 150 (10'4")	3 150 (10'4")

Excluding track shoe lug

\* High track is optionally available.

## DIMENSIONS



Track type	ZAXIS210L		ZAXIS225USRL		ZAXIS240L	
	Std.	High*	Std.	High*	Std.	High*
A Distance between tumblers	3 660 (12'0")	3 660 (12'0")	3 660 (12'0")	3 660 (12'0")	3 840 (12'7")	3 840 (12'7")
B Undercarriage length	4 460 (14'8")	4 460 (14'8")	4 460 (14'8")	4 460 (14'8")	4 640 (15'3")	4 640 (15'2")
*C Counterweight clearance	1 030 (3'5")	1 280 (4'2")	1 020 (3'4")	1 270 (4'2")	1 090 (3'7")	1 330 (4'4")
D Rear-end swing radius	2 750 (9'0")	2 750 (9'3")	1 990 (6'6")	1 990 (6'6")	2 940 (9'8")	2 940 (9'7")
D' Rear-end length	2 750 (9'0")	2 750 (9'3")	1 990 (6'6")	1 990 (6'6")	2 930 (9'7")	2 930 (9'7")
E Overall width of upperstructure	2 710 (8'11")	3 050 (10'0")	2 860 (9'5")	2 860 (9'5")	2 890 (9'6")	2 890 (9'6")
F Overall height of cab	3 060 (10'0")	3 310 (10'10")	3 060 (10'0")	3 310 (10'10")	3 130 (10'3")	3 370 (11'1")
*G Min. ground clearance	450 (1'6")	700 (2'4")	450 (1'6")	700 (2'4")	460 (1'6")	700 (2'4")
H Track gauge	2 390 (7'10")	2 590 (8'6")	2 390 (7'10")	2 590 (8'6")	2 590 (8'6")	2 800 (9'2")
I Track shoe width	G 600 (24")	G 600 (24")	G 600 (24")	G 600 (24")	G 600 (24")	G 600 (24")
J Undercarriage width	2 990 (9'10")	3 190 (10'6")	2 990 (9'10")	3 190 (10'6")	3 190 (10'6")	3 400 (11'2")
K Overall width	2 990 (9'10")	3 190 (10'6")	2 990 (9'10")	3 190 (10'6")	3 190 (10'6")	3 400 (11'2")
L Overall length	9 500 (31'2")	9 500 (31'2")	8 870 (29'7")	8 870 (29'1")	10 140 (33'3")	10 140 (33'3")
M Overall height of boom	3 060 (9'9")	3 310 (10'10")	3 060 (9'9")	3 310 (10'10")	3 130 (10'2")	3 370 (11'1")
N Track height with triple grouser shoes	900 (2'11")	900 (2'11")	900 (3'0")	900 (2'11")	900 (2'11")	900 (2'11")

Track type	ZAXIS280L		ZAXIS350L		ZAXIS380L	
	Std.	High*	Std.	High*	Std.	High*
A Distance between tumblers	4 050 (13'3")	4 050 (13'3")	4 050 (13'3")	4 050 (13'3")	4 050 (13'3")	4 050 (13'3")
B Undercarriage length	4 940 (16'2")	4 940 (16'2")	4 940 (16'3")	4 940 (16'2")	5 060 (16'7")	5 060 (16'7")
*C Counterweight clearance	1 180 (3'10")	1 420 (4'8")	1 160 (3'10")	1 410 (4'8")	1 250 (4'1")	1 440 (4'9")
D Rear-end swing radius	2 940 (9'8")	2 940 (9'7")	3 320 (10'11")	3 320 (10'11")	3 320 (10'11")	3 320 (10'11")
D' Rear-end length	2 930 (9'7")	2 930 (9'7")	3 310 (10'10")	3 310 (10'10")	3 310 (10'10")	3 310 (10'10")
E Overall width of upperstructure	2 890 (9'6")	3 230 (10'7")	2 995 (9'10")	2 995 (9'10")	2 995 (9'10")	2 995 (9'10")
F Overall height of cab	3 220 (10'7")	3 460 (11'4")	3 250 (10'8")	3 500 (11'6")	3 350 (11'0")	3 540 (11'7")
*G Min. ground clearance	510 (1'8")	750 (2'6")	500 (1'8")	750 (2'6")	560 (1'10")	750 (2'6")
H Track gauge	2 590 (8'6")	2 800 (9'2")	2 590 (8'6")	2 800 (9'2")	2 590 (8'6")	2 800 (9'2")
I Track shoe width	G 600 (24")	G 600 (24")	G 600 (24")	G 600 (24")	G 600 (24")	G 600 (24")
J Undercarriage width	3 190 (10'6")	3 400 (11'2")	3 190 (10'6")	3 400 (11'2")	3 190 (10'6")	3 400 (11'2")
K Overall width	3 190 (10'6")	3 400 (11'2")	3 190 (10'6")	3 400 (11'2")	3 190 (10'6")	3 400 (11'2")
L Overall length	10 290 (33'9")	10 290 (33'9")	10 970 (36'0")	10 970 (36'0")	10 930 (35'10")	10 930 (35'10")
M Overall height of boom	3 220 (10'5")	3 460 (11'4")	3 250 (10'8")	3 500 (11'6")	3 350 (11'1")	3 540 (11'7")
N Track height with triple grouser shoes	1 030 (3'3")	1 030 (3'5")	1 030 (3'4")	1 030 (3'5")	1 140 (3'9")	1 140 (3'9")

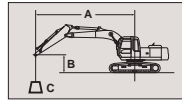
\* Excluding track shoe lug

G: Triple grouser shoe

\* High track is optionally available.

## LIFTING CAPACITIES

### METRIC MEASURE



**A:** Load radius  
**B:** Load point height  
**C:** Lifting capacity

### ZAXIS210L

Rating over-side or 360 degrees Rating over-front Unit: 1 000 kg

Conditions	Load point height	Load radius												At max. reach				
		3 m	4 m	5 m	6 m	7 m	8 m	9 m			meter							
Boom 5.68 m Arm 2.91 m Without bucket Shoe 600 mm Std. track	6 m					*6.05	*6.05	5.47	*5.65	4.24	*4.93					3.97	*4.02	7.27
	4 m	*11.1	*11.1	*8.50	*8.50	6.91	*7.09	5.24	*6.21	4.13	*5.60					3.25	*3.97	8.14
	2 m			8.75	*10.8	6.35	*8.40	4.91	*6.97	3.93	*6.01	3.23	4.95			2.98	*4.21	8.45
	0 (Ground)	*4.60	*4.60	8.26	*11.1	5.99	*8.84	4.66	*7.26	3.77	5.88	3.14	4.85			3.00	4.63	8.26
	-2 m	*10.5	*10.5	8.22	*9.67	5.90	*7.98	4.58	*6.61	3.73	*5.42					3.38	*4.71	7.56
	-4 m			*6.55	*6.55	*5.47	*5.47	*4.16	*4.16							*3.94	*3.94	6.13

### ZAXIS225USRL

Boom 5.68 m Arm 2.91 m Without bucket Shoe 600 mm Std. track	6 m					*6.05	*6.05	5.35	*5.65	4.15	*4.93					3.88	*4.02	7.27
	4 m	*11.1	*11.1	*8.50	*8.50	6.76	*7.09	5.12	*6.21	4.04	*5.60		3.26	*4.64		3.17	*3.97	8.14
	2 m			8.55	*10.8	6.20	*8.40	4.79	*6.97	3.84	*6.01	3.15	5.00			2.90	*4.21	8.45
	0 (Ground)	*4.60	*4.60	8.05	*11.1	5.84	*8.84	4.54	*7.26	3.68	5.93	3.06	4.89			2.93	4.67	8.26
	-2 m	*10.5	*10.5	8.01	*9.67	5.75	*7.98	4.46	*6.61	3.63	*5.42					3.30	*4.71	7.56
	-4 m			*6.55	*6.55	*5.47	*5.47	*4.16	*4.16							*3.94	*3.94	6.13

### ZAXIS240L

Boom 6.00 m Arm 2.96 m Without bucket Shoe 600 mm Std. track	6 m					*6.44	*6.44	*6.43	*6.43	5.54	*5.80					*4.32	*4.32	7.67
	4 m	*14.3	*14.3	10.5	10.5	8.53	8.53	6.76	*7.33	5.33	*6.52	4.31	*5.95			3.92	*4.37	8.46
	2 m			11.3	*12.6	8.15	*10.0	6.28	*8.22	5.03	*7.04	4.13	*6.18			3.62	*4.74	8.73
	0 (Ground)			10.7	*11.2	7.70	*10.3	5.95	*8.49	4.81	*7.16	3.99	6.05			3.66	5.53	8.52
	-2 m	*11.2	*11.2	10.7	*11.1	7.61	*9.24	5.86	*7.71	4.74	*6.42					4.12	*5.38	7.80
	-4 m	*8.50	*8.50	*7.61	*7.61	*6.49	*6.49	*5.23	*5.23							*4.63	*4.63	6.38

### ZAXIS280L

Boom 6.20 m Arm 3.10 m Without bucket Shoe 600 mm Std. track	6 m					*7.67	*7.67	*7.47	*7.47	6.18	*7.00	4.95	*5.19			*4.33	*4.33	8.19
	4 m			*12.3	*12.3	9.86	*9.96	7.48	*8.54	5.92	*7.60	4.81	*6.94			4.03	*4.35	8.91
	2 m			*10.5	*10.5	8.99	*11.8	6.95	*9.71	5.58	*8.31	4.60	*7.33	3.86	*5.72	3.76	*4.65	9.15
	0 (Ground)			*10.2	*10.2	8.51	*12.3	6.59	*10.1	5.34	*8.59	4.44	*7.19			3.82	*5.31	8.93
	-2 m			11.9	*13.5	8.42	*11.3	6.49	*9.44	5.26	*7.95	4.41	*6.57			4.26	*6.22	8.22
	-4 m			*9.94	*9.94	*8.49	*8.49	6.63	*7.04							5.55	*5.56	6.87

### ZAXIS350L

Boom 6.40 m Arm 3.20 m Without bucket Shoe 600 mm Std. track	6 m					*11.4	*11.4	*10.2	*10.2	8.03	*9.34	6.44	*8.71			5.69	*5.79	8.58
	4 m			*17.1	*17.1	12.6	*13.6	9.61	*11.5	7.62	*10.1	6.21	*9.08	5.13	*7.88	4.90	*5.85	9.24
	2 m			*12.2	*12.2	11.5	*15.6	8.88	*12.7	7.15	*10.8	5.90	9.25	4.96	7.74	4.61	*6.25	9.44
	0 (Ground)			*13.5	*13.5	10.9	*15.5	8.42	*12.9	6.81	*10.9	5.67	8.99	4.82	7.59	4.68	*7.11	9.20
	-2 m			15.2	*15.9	10.8	*13.6	8.29	*11.5	6.71	*9.72	5.62	*8.06			5.22	*7.12	8.49
	-4 m			*10.7	*10.7	*9.48	*9.48	*8.01	*8.01	*6.18	*6.18					*5.80	*5.80	7.16

### ZAXIS380L

Boom 6.40 m Arm 3.20 m Without bucket Shoe 600 mm Std. track	6 m					*11.5	*11.5	*10.2	*10.2	8.54	*9.37	6.87	*8.72			*5.79	*5.79	8.62
	4 m			*17.3	*17.3	13.4	*13.7	10.2	*11.6	8.12	*10.1	6.63	*9.10	5.51	*8.03	5.25	*5.86	9.26
	2 m			*11.9	*11.9	12.2	*15.6	9.48	*12.8	7.65	*10.9	6.33	*9.47	5.33	*8.36	4.96	*6.28	9.44
	0 (Ground)			*13.8	*13.8	11.7	*15.5	9.04	*12.8	7.32	*10.9	6.11	*9.31	5.20	*7.90	5.07	*7.16	9.18
	-2 m			15.7	*15.7	11.6	*13.4	8.92	*11.4	7.23	*9.62	6.07	*7.95			5.67	*7.08	8.44
	-4 m					*9.22	*9.22	*7.77	*7.77	*5.88	*5.88					*5.70	*5.70	7.07

Notes: 1. Ratings are based on ISO 1097.

2. Lifting capacity of the ZAXIS Series does not exceed 75% of tipping load with the machine on firm, level ground or 87% full hydraulic capacity.

3. The load point is the center-line of the bucket pivot mounting pin on the arm.

4. \*Indicates load limited by hydraulic capacity.

## STANDARD EQUIPMENT

Standard equipment may vary by country, so please consult your Hitachi dealer for details.

### ENGINE

- H/P mode control
- E mode control
- 50 A alternator
- Dry-type air filter with evacuator valve (with Air cleaner restriction switch for monitor)
- Cartridge-type engine oil filter
- Cartridge-type fuel filter
- Pre-cleaner
- Air cleaner double filters
- Radiator and oil cooler with dust protective net
- Radiator reserve tank
- Fan guard
- Isolation-mounted engine
- Auto-idle system
- Auto acceleration system

### HYDRAULIC SYSTEM

- Work mode selector
- Engine speed sensing system
- E-P control system
- Power boost
- Auto power lift
- Quick warm-up system for pilot circuit
- Shockless valve in pilot circuit
- Boom-arm anti-drift valve
- Control valve with main relief valve
- Extra port for control valve
- Suction filter
- Full-flow filter
- Pilot filter
- Attachment basic piping
- Electric controlled operation for front-end attachment

### CAB

#### CRES (Center pillar Reinforced Structure) cab

- OPG top guard fitted level I (ISO) compliant cab.
- All-weather sound-suppressed steel cab
- Reinforced, tinted (bronze color) glass windows

- 4 fluid-filled elastic mounts
- Openable front windows; upper and lower front, and left side
- Cab with overhead window
- Overhead window washer and wiper
- Intermittent windshield retractable wipers
- Front window washer
- Adjustable reclining seat with adjustable armrests
- Footrest
- Electric double horn
- AM - FM radio with digital clock
- Auto-idle / acceleration selector
- Seat belt
- Drink holder
- Cigar lighter
- Ashtray
- Storage box
- Glove compartment
- Floor mat
- Heater
- Pilot control shut-off lever
- Engine stop knob
- Electrical switch for attachment

### MONITOR SYSTEM

- Meters:
  - Hourmeter and trip-meter, engine coolant temperature gauge and fuel gauge.
- Warning lamps:
  - Alternator charge, engine oil pressure, engine overheat, air filter restriction and minimum fuel level.
- Pilot lamps:
  - Engine preheat, work light, auto-idle, auto-acceleration, digging mode and attachment mode
- Alarm buzzers:
  - Engine oil pressure and engine overheat

### LIGHTS

- 2 working lights

### UPPERSTRUCTURE

- Undercover
  - Heavier counterweight
  - ZAXIS210L: 5 250 kg (11 600 lb) counterweight
  - ZAXIS225USRL: 6 900 kg (15 200 lb) counterweight
  - ZAXIS240L: 6 500 kg (14 300 lb) counterweight
  - ZAXIS280L: 6 500 kg (14 300 lb) counterweight
  - ZAXIS350L: 8 600 kg (19 000 lb) counterweight
  - ZAXIS380L: 8 600 kg (19 000 lb) counterweight
- Fuel level float
- Hydraulic oil level gauge
- Tool box
- Utility space
- Rearview mirror (right & left side)
- Swing parking brake
- Electric lubricator (ZAXIS350L, ZAXIS380L)

### UNDERCARRIAGE

- Travel parking brake
- Reinforced travel motor covers (thickness 9 mm)
- Track guards and hydraulic track adjuster
- Bolt-on sprocket
- Reinforced upper rollers
- Reinforced track springs
- Reinforced idler brackets
- Lower rollers
- Reinforced track links with pin seals
- Triple grouser shoes
- Full track guard

### FRONT ATTACHMENTS

- Strengthened durable front attachment
- HN bushing
- WC thermal spraying
- Reinforced resin thrust plate
- Flanged pin
- Bucket clearance adjust mechanism
- Monolithically cast bucket link A
- Centralized lubrication system
- Dirt seal on all bucket pins
- Boom highlift brackets
- Arm with damage prevention plates
- Reinforced bucket link B (long type)

### MISCELLANEOUS

- Standard tool kit
- Lockable machine covers
- Lockable fuel filling cap
- Skid-resistant tapes, plates and handrails.
- Travel direction mark on track frame

## OPTIONAL EQUIPMENT

Optional equipment may vary by country, so please consult your Hitachi dealer for details.

- Auto control air conditioner
- Hose rupture valves
- Electric fuel refilling pump
- Swing motion alarm device with lamps
- Travel motion alarm device
- Additional pump
- Auto-lubrication system
- KAB 515 suspension seat
- Fuel double filters

- Tropical cover
- Large-capacity battery
- Large-capacity generator
- ZAXIS210L, 225USRL: 60A
- ZAXIS240L, 280L: Not available
- ZAXIS350L, 380L: 90A
- Attachment basic piping (Large size piping)
- Accessories for 2 speed selector

- Front glass lower guard
- Front glass upper guard
- Upperstructure undercover (thickness 6 mm)
- Track undercover (thickness 9 mm)
- Double grouser shoes
- Catwalk
- Right-front side corner guard
- High track
- 0.7 m cab rizer kit