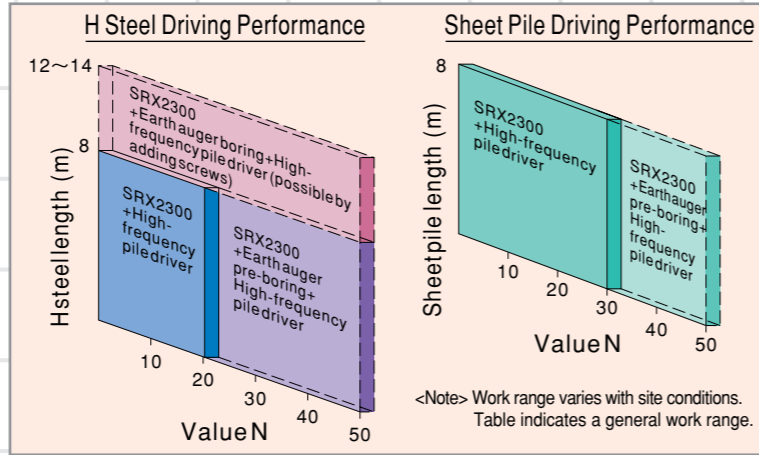
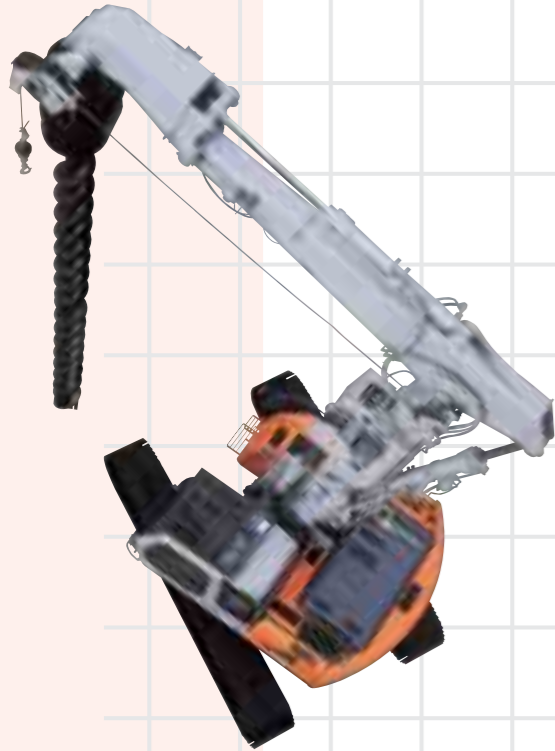


Hydraulic Leaderless Foundation Machine

For difficult foundation work under unfavorable job site conditions

- The machine displays its abilities in such a job site as is limited in space or height.

SRX2300 (Short-tail-swing version)



Attachments

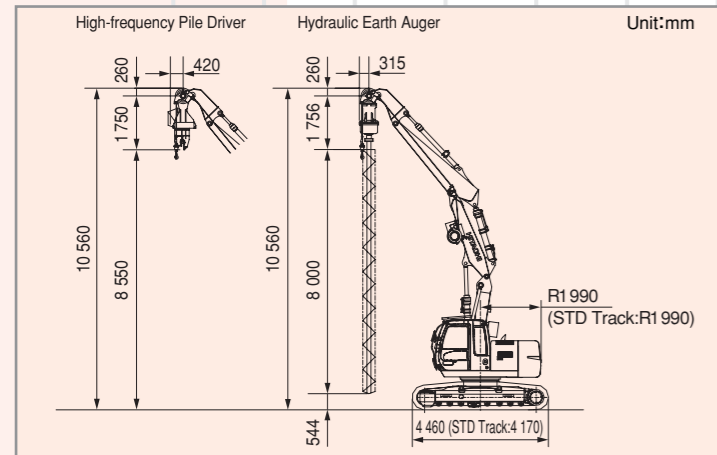
Hydraulic Earth Auger		Hydraulic Vibrator	
Type	SKH-50S	Type	HHV-07S
Weight	kg 1 200	Weight	kg 1 400
Max. torque	kN·m (tf·m) 26.2 (2.67)	Vibration	c.p.m 2 200
Rotation speed	min ⁻¹ (rpm) 28	Vibration force	kN (tf) 159.8 (16.3)

Option

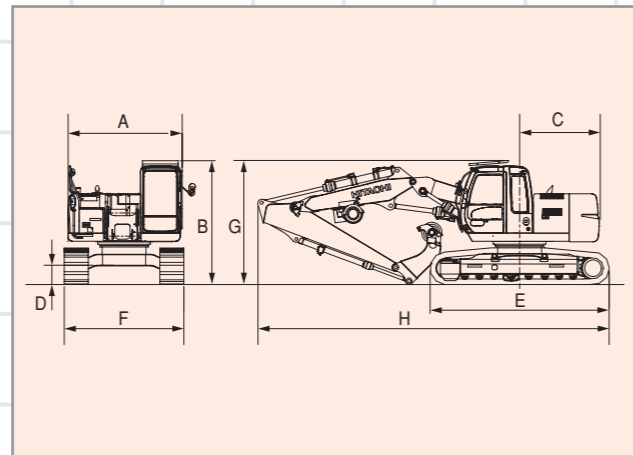
- Hydraulic earth auger
- STD track
- 600mm grouser shoe

Optional equipment included

Dimensions



Dimensions at Transport



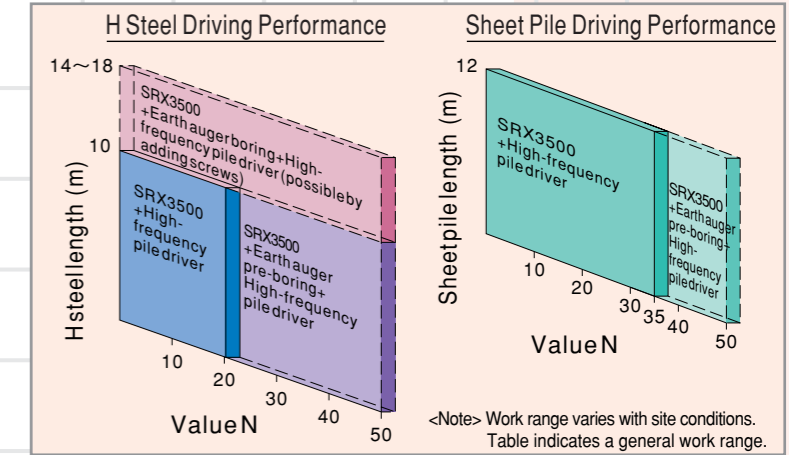
Specifications

		LC Track/STD Track
Operating weight*	kg	24 280/23 780
Ground pressure*	kPa (kgf/cm ²)	50 (0.51) / 53 (0.54)
Vertical tracing speed	m/min	15.0
Horizontal tracing speed	m/min	6.0
Swing speed	min ⁻¹ (rpm)	13.3
Travel speed High/Low	km/h	5.5/3.3
Gradeability	degree (%)	35 (70)
Engine Model		Isuzu AA-6BGIT
Rated output	kW/min ⁻¹ (PS/rpm)	110/2 100 (150/2 100)

	LC Track Type	STD Track Type (Option)
A Overall upperstructure width	mm 2 990	mm 2 860
B Cab height from ground	mm 3 090	mm 3 090
C Rear-end swing radius	mm 2 000	mm 2 000
D Ground clearance	mm 490	mm 490
E Overall undercarriage length	mm 4 460	mm 4 170
F Overall undercarriage width	mm 2 990	mm 2 800
G Overall width at transport	mm 3 090	mm 3 090
H Overall length at transport	mm 8 750	mm 8 605

<Notes> ● * With 600mm flat shoe and without attachment
● Data shown above are in SI units, followed by data in conventional units in ().

SRX3500-2 (Short-tail-swing version)



Attachments

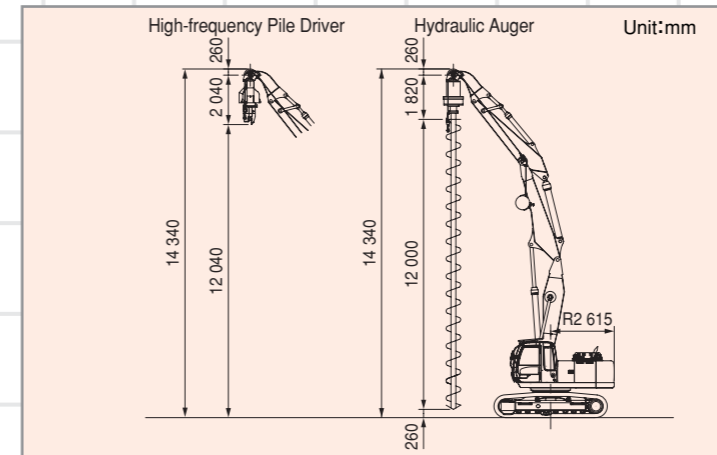
Hydraulic Earth Auger		Hydraulic Vibrator	
Type	SKH-50S-T4	Type	HHV-09S
Weight	kg 1 800	Weight	kg 1 700
Max. torque	kN·m (tf·m) 39.2 (4.0)	Vibration	c.p.m 2 000
Rotation speed	min ⁻¹ (rpm) 26.4	Vibration force	kN (tf) 197 (20.1)

Optional

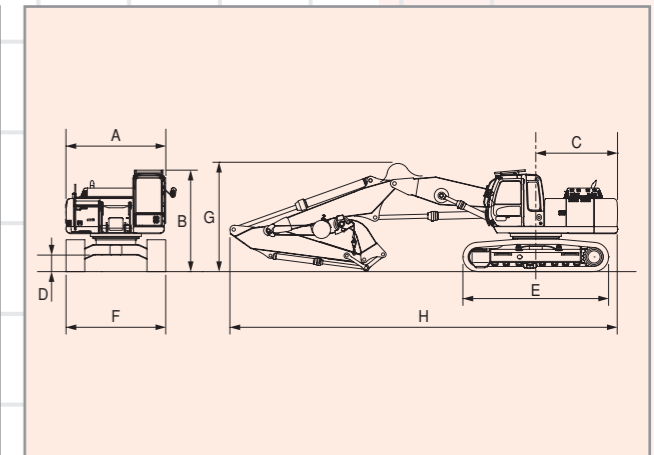
- 2.9 ton Crane attachment

Optional equipment such as auger included

Dimensions



Dimensions at Transport



Specifications

		STD Track	LC Track
Operating weight*	kg	39300	39900
Ground pressure*	kPa (kgf/cm ²)	79.8 (0.81)	74.9 (0.76)
Vertical tracing speed	m/min		15.0
Horizontal tracing speed	m/min		6.0
Swing speed	min ⁻¹ (rpm)		6.0
Travel speed High/Low	km/h		5.5/3.6
Gradeability	degree (%)		35 (70)
Engine Model		Isuzu AA-6HK1X	
Rated output	kW/min ⁻¹ (PS/rpm)	184/2 000 (250/2 000)	

	STD Track Flat Shoe (600mm)	LC Track Flat Shoe (600mm)
A Overall upperstructure width	mm 3 190	mm 3 190
B Cab height from ground	mm 3 250	mm 3 270
C Rear-end swing radius	mm 2 615	mm 2 615
D Ground clearance	mm 500	mm 500
E Overall undercarriage length	mm 4 650	mm 4 950
F Overall undercarriage width	mm 3 190	mm 3 190
G Overall width at transport	mm 3 500	mm 3 500
H Overall length at transport	mm 12 400	mm 12 400

<Note> ● Data shown above are in SI units, followed by data in conventional units in ().