

Telescopic Crawler Crane

Compact body but large lifting capacity for operations in confined space

Moment limiter

When a load exceeds a certain limit, the alarm sounds and the crane automatically stops the motion to prevent the machine from tipping. The operator can check various information displayed on the digital monitor.

Working range limiter

When any one of boom angle (upper and lower), max. working radius, and max. hook lift above ground level exceeds a preset level, the crane automatically stops.

Overhoist prevention device

When the hook is overhoisted, the alarm sounds and the crane automatically stops to prevent the rope from being damaged.

Large hook lifts and productivity

A large-diameter winch ensures large hook lifts and smooth inching operation.



ZAXIS75URT Rated Lifting Capacity 4.9 Tons

- Various safety devices are provided standard.
- Big lifting capacity and deep lowering below ground level.

Variety of Safety Devices

Moment limiter, working range limiter, hook overhoist prevention device, external load ratio indicator



Moment limiter



TX40UR Rated Lifting Capacity 2.9 Tons

- High-powered, mobile crane with various safety devices including a moment limiter.
- It has a large lifting capacity and a hook lift below ground level.

Various safety devices

Moment limiter, height limiter (option), external load ratio indicator.

Moment Limiter

Along with alarm sounding, automatically stops hook hoisting, boom lowering, and boom extending to prevent tipping due to overload. The operator can monitor the load ratio with three color lamps during operation.

Height Limiter (Option)

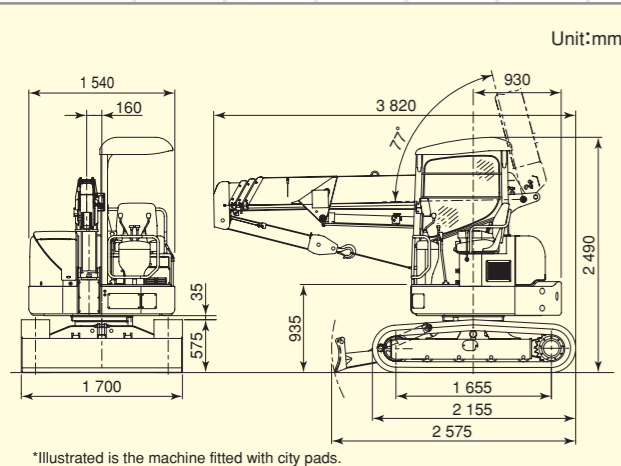
Automatically stops the machine when the crane end exceeds the preset height, ensuring safe operation near elevated highway and transmission line.



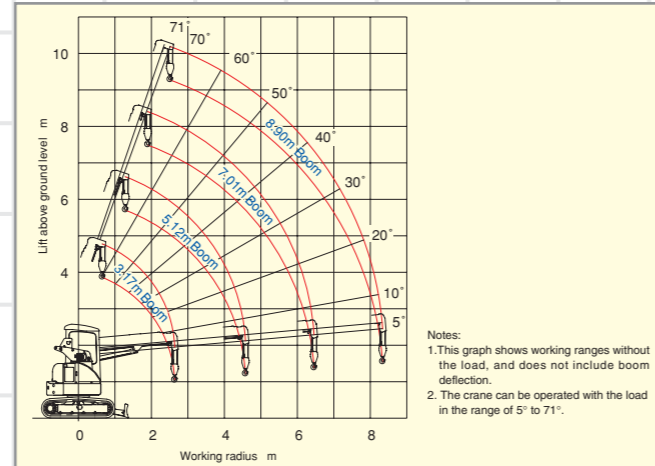
Moment Limiter

Lifting mode selector switch

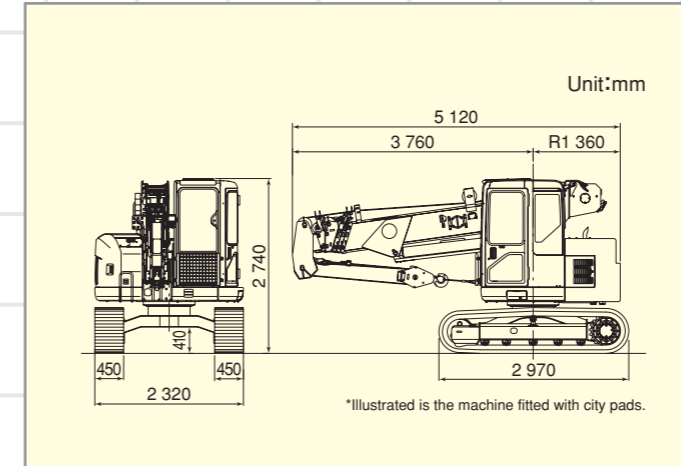
Dimensions



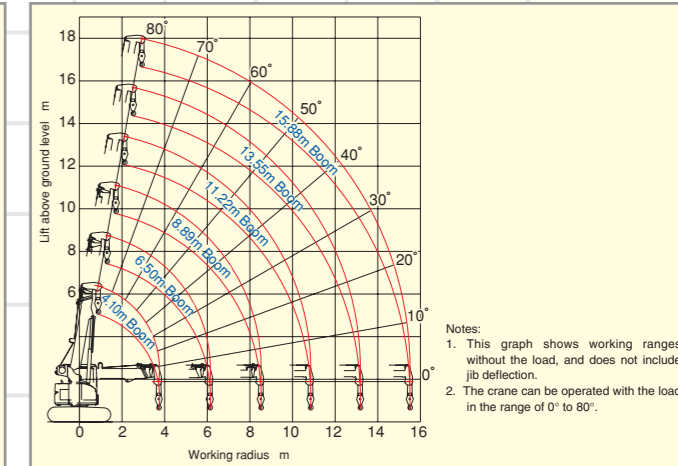
Working Range Diagram



Dimensions



Working Range Diagram



Specifications

Applicable Models	TX40UR	
	City Pads Shoe	Separate type City Pads Shoe
Operating weight	kg	4 000 / 4 010
Overall transport length	mm	3 820
Max. lifting load × working radius	t×m	2.9×1.4
Max. hook lift above ground level	m	9.3 (4 reeving)
Max. hook lift below ground level	m	16.0 (4 reeving)*
Boom length	m	3.17 to 8.90
Boom hoist angle	degree	-1° to 76°
Boom hoisting speed	S	11.0 (-1° to 76°)
Boom extending speed	m/S	High 5.7 / Low 16.0
Hoisting rope speed	m/min	17.0
Hoisting rope	mm×m	8 Dia.×74
Swing speed	min ⁻¹ (rpm)	2.7 (2.7)
Travel speed	km/h	High 3.1 / Low 2.1
Engine		
Model		Isuzu 3LDI
Rated output	kW/min ⁻¹ (PS/rpm)	18 / 1 950 (24 / 1 950)

Gross Rated Capacity (4 reeving)

Working radius (m)	Gross Rated Capacity (kg)			
	3.17m Boom at Rest	5.12m Boom at Rest	7.01m Boom at Rest	8.9m Boom at Rest
1.30	2 900	2 900		
1.40	2 900	2 900		
1.50	2 600	2 400		
1.60	2 250	2 100		
1.90	1 650	1 620	1 500	
2.00	1 520	1 500	1 400	
2.20	1 300	1 300	1 250	
2.50	2.64m×1 000*	1 070	1 030	840
3.00		870	880	690
4.00		600	520	470
4.70		4.585m×510*	420	390
5.00			390	360
6.00			6.48m×255*	280
7.00				235
8.00				205
8.20				200
8.35				190

Notes: ● The rated loads shown do not exceed 78% of tipping load with the machine on firm level ground. Forward stability is 1.15 or more.
● The load to be actually lifted is the listed total load minus weight of sling fittings such as hook.
● *Working radius m × Gross rated capacity kg.

Specifications

Applicable Models	ZAXIS75URT		
	Grouser Shoes	City Pads Shoe	Separate type City Pads Shoe
Operating weight	kg	10 130	10 460 / 10 180
Overall transport length	mm	5 220	5 250 / 5 250
Max. lifting load × working radius	t×m	4.9×2.1	
Max. hook lift above ground level ²	m	16.6 (4 reeving)	
Max. hook lift below ground level ²	m	34.5 (4 reeving)*	
Boom length	m	4.1 to 15.9	
Boom hoist angle	degree	-8° to 80°	
Boom hoisting speed	S	13.3 (-8° to 80°)	
Boom extending speed	m/S	11.7/21.0	
Hoisting rope speed	m/min	High 104/Low 52	
Hoisting rope	mm×m	10 Dia.×160/10 Dia.×120	
Swing speed	min ⁻¹ (rpm)	2.5 (2.5)	
Travel speed	km/h	3.3	
Engine			
Model		Isuzu CC-4JG1	
Rated output	kW/min ⁻¹ (PS/rpm)	40.5/2 100 (55/2 100)	

The machine shown may vary according to territory Specifications.
<Note> ● Data shown above are in SI units, followed by data in conventional units in ().
*: When hook lift becomes large, the rope is likely to be kinked.
*2: Maximum hook lowering below ground level is determined when hoisting rope length is 160 m.

Gross Rated Capacity (4 reeving)

Working radius (m)	Gross Rated Capacity (kg)					
	4.10m Boom at Rest	6.50m Boom at Rest	8.89m Boom at Rest	11.22m Boom at Rest	13.55m Boom at Rest	15.88m Boom at Rest
2.00	4 900	4 900				
2.50	3 910	3 850	2 930			
3.00	2 980	2 980	2 810	2 030		
3.50	2 300	2 350	2 250	2 030		
4.00	3.72m×2 100*	2 000	1 900	1 880	1 200	
4.50		1 650	1 600	1 580	1 100	
5.00		1 400	1 400	1 350	1 020	650
6.00		1 020	1 030	1 040	870	530
7.00		6.12m×1 010*	820	820	720	430
8.00			680	680	640	380
9.00			8.51m×570*	560	570	330
10.00				470	500	290
11.00				10.84m×410*	420	270
12.00					360	250
13.00					310	230
14.00					13.17m×290*	210
15.00						200
15.50						200

Notes: ● The rated loads shown do not exceed 78% of tipping load with the machine on firm level ground. Forward stability is 1.15 or more.
● The load to be actually lifted is the listed total load minus sling fittings such as hook. (4.9 ton hook: 95 kgf)
● *Working radius m × Gross rated load kg.

The machine shown may vary according to territory Specifications.
<Note> *When hook lift becomes large, the rope is likely to be kinked.
● Data shown above are in SI units, followed by data in conventional units in ().

ZAXIS135UST Rated Lifting Capacity 4.9 Tons

- Various safety devices are provided standard.
- Big lifting capacity and deep lowering below ground level.

Variety of Safety Devices

Moment limiter, working range limiter, hook overhoist prevention device, external load ratio indicator.



Moment limiter



ZAXIS160LCT Rated Lifting Capacity 8 Tons

- Various safety devices are provided standard.
- Big lifting capacity and deep lowering below ground level.

Variety of Safety Devices

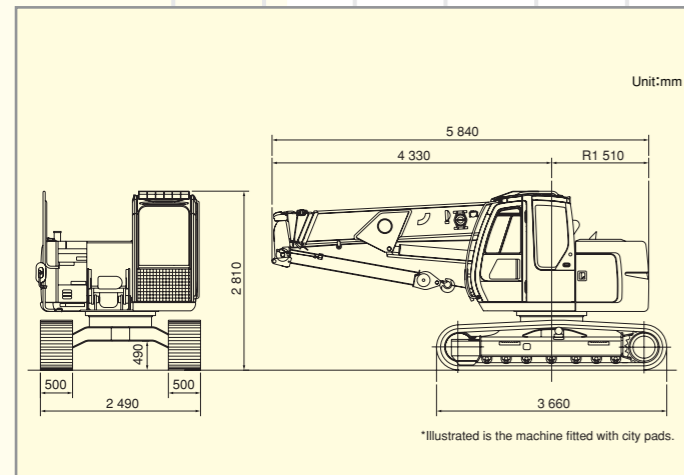
Moment limiter, working range limiter, hook overhoist prevention device, external load ratio indicator.



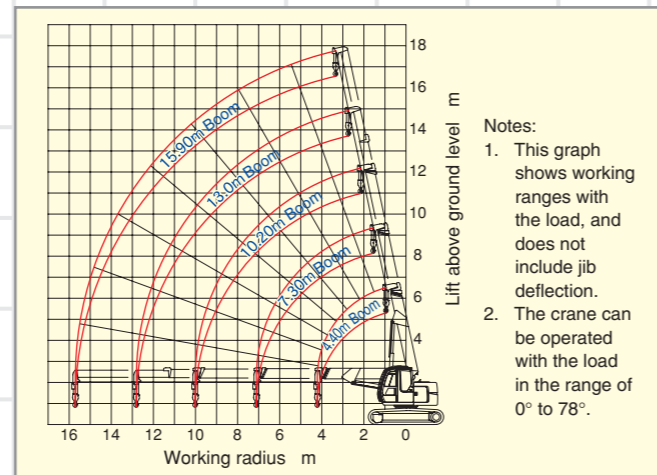
Moment limiter



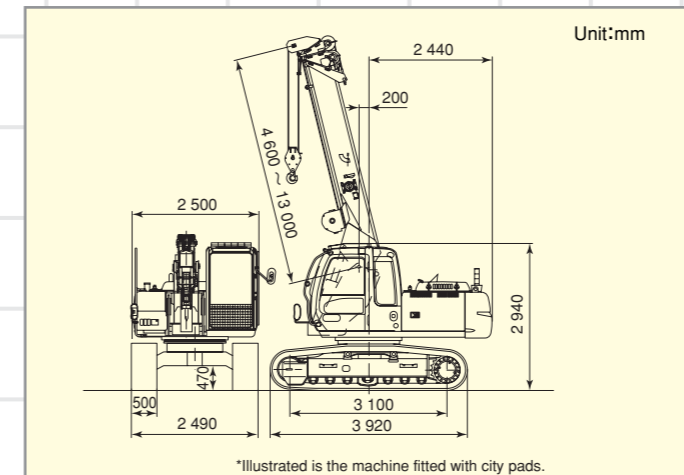
● Dimensions ●



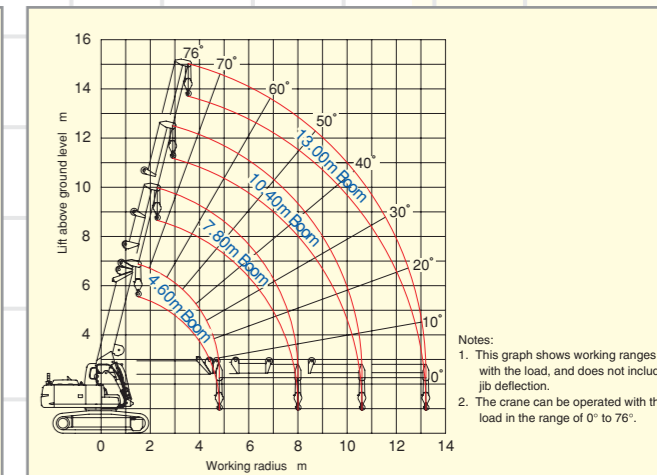
● Working Range Diagram ●



● Dimensions ●



● Working Range Diagram ●



● Specifications ●

Applicable Models	ZAXIS135UST			
	Grouser Shoes	City Pads Shoe	Separate type City Pads Shoe	
Operating weight	kg	14 200	14 700	14 300
Max. lifting load × working radius	t×m	4.9×3.1		
Max. hook lift above ground level ²	m	16.6 (4 reeving)		
Max. hook lift below ground level ²	m	36.0 (4 reeving)*		
Boom hoisting/lowering device	m	Hydraulic cylinder controlled type		
Boom length	m	4.4 to 15.9		
Boom hoist angle	degree	-3° to 78°		
Boom hoisting speed	S	13.0 (-3° to 78°)		
Boom extending speed	m/S	11.5/24.0		
Hoisting rope speed	m/min	High 100/Low 64		
Hoisting rope	mm×m	10 Dia.×160/10 Dia.×120		
Swing speed	min ⁻¹ (rpm)	2.5 (2.5)		
Travel speed	km/h	3.0		
Engine				
Model		Isuzu CC-4BG1TC		
Rated output	kW/min ⁻¹ (PS/rpm)	63/1 950 (85/1 950)		

● Gross Rated Capacity (4 reeving) ●

Working radius (m)	ZAXIS135UST				
	4.4m Boom	7.3m Boom	10.2m Boom	13.0m Boom	15.9m Boom
2.50	4 900	4 900			
3.10	4 900	4 900			
3.50	4 400	4 440	3 000	3 000	
3.85	4 000	4 000	3 000	3 000	
4.00	3 820	3 820	3 000	3 000	2 600
4.20	3 580	3 580	3 000	3 000	2 600
4.50		3 220	3 000	3 000	2 600
5.00		2 730	2 700	2 600	2 600
5.15		5.31m×2 500*	5.33m×2 500*	2 500	2 500
5.50		2 380	2 400	2 270	2 270
6.00		2 070	2 110	2 000	2 000
6.50		1 810	1 860	1 820	1 800
7.10		1 580	1 630	1 670	1 620
7.50			1 500	1 560	1 520
8.00			1 350	1 430	1 400
8.50			1 220	1 300	1 300
9.00			1 110	1 200	1 200
10.00			920	1 000	1 000
11.00				850	890
12.00				730	770
12.80				650	680
13.00					670
14.00					580
15.00					500
15.70					450

Notes: ● The rated loads shown do not exceed 78% of tipping load with the machine on firm level ground. Forward stability is 1.15 or more.
● The load to be actually lifted is the listed total load minus sling fittings such as hook. (4.9 ton hook: 55 kg)
● *Working radius m × Gross rated capacity kg.

● Specifications ●

Applicable Models	ZAXIS160LCT		
	Grouser Shoes	Artliner Shoes	
Operating weight	kg	15 400	15 900
Overall transport length	mm	7 360	
Max. lifting load × working radius	t×m	8.0×2.5	
Max. hook lift above ground level	m	13.7 (5 reeving)	
Max. hook lift below ground level	m	18.0 (5 reeving)*	
Boom length	m	4.6 to 13.0	
Boom hoist angle	degree	-3° to 76°	
Boom hoisting speed	S	10.0 (-3° to 76°)	
Boom extending speed	m/S	8.4 /14.0	
Hoisting rope speed	m/min	High 97/Low 66	
Hoisting rope	mm×m	10 Dia.×111	
Swing speed	min ⁻¹ (rpm)	2.0 (2.0)	
Travel speed	km/h	3.0	
Engine			
Model		Isuzu AA-4BG1TC	
Rated output	kW/min ⁻¹ (PS/rpm)	81 / 2 150 (110 / 2 150)	

The machine shown may vary according to territory Specifications.
● Data shown above are in SI units, followed by data in conventional units in ().

● Gross Rated Capacity (5 reeving) ●

Working radius (m)	ZAXIS160LCT			
	4.6m Boom	7.8m Boom	10.4m Boom	13.0m Boom
2.50	8 000	2.7m×7 000*		
3.00	7 000	7 000		
3.50	5 500	5 500	4 900	
4.00	4 900	4 900	4 900	3 900
4.50	4 150	4 250	4 300	3 900
5.00	4.8m×3 775*	3 650	3 650	3 650
6.00		2 820	2 820	2 820
7.00		2 250	2 250	2 250
8.00		1 820	1 820	1 820
9.00			1 550	1 550
10.00			1 320	1 320
11.00			10.6m×1 220*	1 160
12.00				1 020
13.00				920
13.20				900

Notes: ● The rated loads shown do not exceed 78% of tipping load with the machine on firm level ground. Forward stability is 1.15 or more.
● The load to be actually lifted is the listed total load minus sling fittings such as hook. (8.0 ton hook: 75 kg)
● *Working radius m × Gross rated capacity kg.

The machine shown may vary according to territory Specifications.
<Note> ● Data shown above are in SI units, followed by data in conventional units in ().
*: When hook lift becomes large, the rope is likely to be kinked.
*2: Maximum hook lowering below ground level is determined when hoisting rope length is 160 m.